

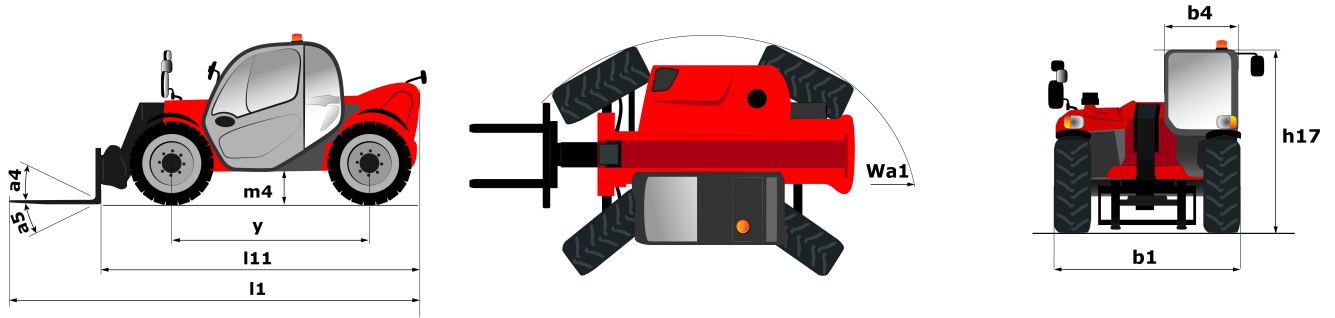
Technical sheet :

MT-X 625 H



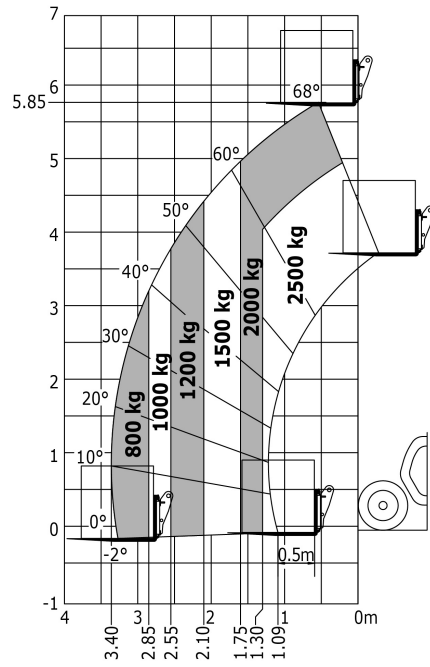
| Capacities | | Metric | Imperial |
|---|-----------|---|---|
| Max. capacity | Q | 2500 kg | 5512 lbs |
| Max. lifting height | h3 | 5.85 m | 19 ft 2 in |
| Max. Reach | l4 | 3.36 m | 11 ft |
| Breakout force with bucket | | 3427 daN | 3427 daN |
| Weight and dimensions | | | |
| Overall length to carriage | l11 | 3.89 m | 12 ft 9 in |
| Overall width | b1 | 1.81 m | 5 ft 11 in |
| Overall height | h17 | 1.92 m | 6 ft 4 in |
| Wheelbase | y | 2.3 m | 7 ft 7 in |
| Ground clearance | m4 | 0.33 m | 1 ft 1 in |
| Overall cab width | b4 | 0.79 m | 2 ft 7 in |
| Tilt-up angle | a4 | 12 ° | 12 ° |
| Tilt-down angle | a5 | 117 ° | 117 ° |
| External turning radius (over tyres) | Wa1 | 3.31 m | 10 ft 10 in |
| Unladen weight (with forks) | | 4710 kg | 10384 lbs |
| Tyres type | | Pneumatic | Pneumatic |
| Standard tyres | | Solideal 12-16,5 12PR SKS XT TL | Solideal 12-16,5 12PR SKS XT TL |
| Forks length / width / section | l / e / s | 1200 mm x 125 mm / 45 mm | 47.244 in x 4.921 in / 1.772 in |
| Performances | | | |
| Lifting | | 8.9 s | 8.9 s |
| Lowering | | 6 s | 6 s |
| Extension | | 6.1 s | 6.1 s |
| Retraction | | 4.3 s | 4.3 s |
| Crowd | | 3 s | 3 s |
| Dump | | 3.3 s | 3.3 s |
| Engine | | | |
| Engine brand | | Kubota | Kubota |
| Engine norm | | Stage III A | Stage III A |
| Engine model | | V3307-DI-T-E4B | V3307-DI-T-E4B |
| Number of cylinders / Capacity of cylinders | | 4 - 3331 cm ³ | 4 - 203.27 in ³ |
| I.C. Engine power rating - Power (kW) | | 75 Hp / 55.4 kW | 75 Hp / 55.4 kW |
| Max. torque / Engine rotation | | 265 Nm @ 1400 rpm | 265 Nm @ 1400 rpm |
| Drawbar pull (Laden) | | 3550 daN | 3550 daN |
| Transmission | | | |
| Transmission type | | Hydrostatic | Hydrostatic |
| Number of gears (forward / reverse) | | 2 / 2 | 2 / 2 |
| Max. travel speed | | 25 km/h | 15.5 mph |
| Parking brake | | Automatic Negative Hand-brake | Automatic Negative Hand-brake |
| Service brake | | Oil-Immersed multi-discs braking on front axles | Oil-Immersed multi-discs braking on front axles |
| Hydraulics | | | |
| Hydraulic pump type | | Gear pump | Gear pump |
| Hydraulic flow / Pressure | | 88 l/min / 235 Bar | 88 l/min / 16 PSI |
| Tank capacities | | | |
| Engine oil | | 11.20 l | 2.96 US gal |
| Hydraulic oil | | 115 l | 30.38 US gal |
| Fuel tank | | 63 l | 16.64 US gal |
| Noise and vibration | | | |
| Noise at driving position (LpA) | | 75 dB(A) | 75 dB(A) |
| Noise to environment (LwA) | | 104 dB(A) | 104 dB(A) |
| Vibration on hands/arms | | < 2.5 m/s | < 8.2 ft/s |
| Miscellaneous | | | |
| Steering wheels (front / rear) | | 2 / 2 | 2 / 2 |
| Drive wheels (front / rear) | | 2 / 2 | 2 / 2 |
| Safety / Safety cab homologation | | Standard EN 15000 / Cab ROPS - FOPS Level 1 | Standard EN 15000 / Cab ROPS - FOPS Level 1 |
| Controls | | JSM | JSM |

Dimensional drawing



Load chart

Machine on tyres with forks Metric





Siège Social
430 rue de l'Aubinière - 44150 Ancenis Cedex - France
Tel: +33(0)2 40 09 10 11 - Fax: +33 (0)2 40 09 10 97
www.manitou.com



This brochure describes versions and configuration options for Manitou products which may be fitted with different equipment. The equipment described in this brochure may be standard, optional or not available depending on version. Manitou reserves the right to change the specifications shown and described at any time and without prior warning. The manufacturer is not liable for the specifications given. For more information, contact your Manitou dealer. Non-contractual document. Product descriptions may differ from actual products. List of specifications is not comprehensive. The logos and visual identity of the company are the property of Manitou and may not be used without authorisation. All rights reserved. The photos and diagrams contained in this brochure are provided for information only.

MANITOU BF SA - Limited company with board of directors - Share capital: 39,668,399 euros - 857 802 508
RCS Nantes